

Host:  國際漢語節協會
Chinese Language Festival Association



Chief Organiser: **Avenues 爱文**

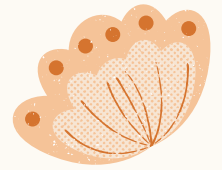
Honourable Co-organiser:

 傳承
HONG KONG FOUNDATION HONG KONG INHERITAGE FOUNDATION

The 5th Chinese Language Festival 2024/2025 Competition Items and Regulations



**Chinese sounds and words,
echoing heavens and earth**



Platform
Powered by:



**Entry Submission Period:
1 October 2024 to 31 March 2025**

**Result Announcement:
Results announced within one month of submission.**

▼ Scan to register ▼





Co-organisers



海外爱培 (IEP)
创新融合课程
SCNU INNOVATIVE
EDUCATION PROGRAMME





Co-organisers



Made in Hayward



嶺南大學香港同學會小學
Lingnan University Alumni Association (Hong Kong) Primary School



Co-organisers



Canadian International School of Hong Kong
香港加拿大國際學校





Bureau Members



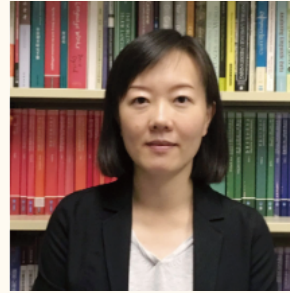
Prof. Siu-Lam Tin

President of Chinese Language Festival Association
Chief Judge



Dr. Xiaoping Wang

Vice President of Chinese Language Festival Association
Chairman of the Organizing Committee



Dr. Yuan Liang

Associate Professor of the Department of Chinese Language Studies at the Education University of Hong Kong
Vice President of Chinese Language Festival Association
Chief Judge of Hong Kong, Macau and Taiwan Region



Ms. Debbie Tai

Vice President of Chinese Language Festival Association Executive Committee



Ms. Anna Liu

Chinese Language Lead at Avenues World School Shenzhen
Lecturer for Micro-Programs at South China Normal University
Senior Trainer in International Teaching Methods



Prof. Chung Mou Si

Former Dean of the Department of Chinese Language Studies at the Education University of Hong Kong
Chief Adviser



Ms. Zhao Hui Xu

Executive Principal P-12, Beanstalk International Bilingual School, Haidian Academy
Chief Judge of Mainland China Region



Ms. Delinda Wu

Director of Chinese and World Languages, Singapore American School
Chief Judge of Overseas Region



Mr. Miao Yang Zhang

Internationally renowned recitation and voice-over artist
Chief Dubbing Supervisor at Phoenix TV
President of the Hong Kong Language Arts Association



Ms. Anita Shum

Founder of Mini Mandarins
Executive Member of Chinese Language Festival Association



Ms. Candy Chan

Principal of PLK Tin Ka Ping Millennium Primary School



Ms. Hiu Ling Ng

Principal of Lingnan University Alumni Association (Hong Kong) Primary School



Bureau Members



Mr. Lap Ming Chow

Vice Principal of Fung Kai
No.1 Primary School



Dr. Miao Chen

Founder of Miao Miao Education



Dr. Mengyao Jin

Co-Director of the Center for
Chinese Studies,
The Education University
of Hong Kong

Executive Member of Chinese
Language Festival Association



Dr. De Zeng

Associate Professor at the School of
Journalism and Communication,
Central China Normal University

Chief Organiser for the China region
at the 9th to 14th Busan International
Dance Festival



Dr. Zhen Li

Assistant Professor of the Department
of Chinese Language Studies at
the Education University of Hong Kong

Executive Member of Chinese
Language Festival Association



Dr. Ruochen Han

Associate Director of the Music
Education Department,
School of Music and Dance,
Guangzhou University.



Dr. Fei Li

Senior Lecturer at the Chinese
Language Teaching and Testing Center,
Lingnan University.

Adjunct Professor at
the Institute of Linguistics,
Shaanxi Normal University.



Ms. Wenhong Zhu

Vice Principal of Hong Kong
Dalton School



Mr. Xun Li

Lead Judge of
Chinese Language Festival



Ms. Weichun Liang

Teacher at the School of
Professional and Continuing Education,
The University of Hong Kong.

Lead Judge of Chinese
Language Festival



Dr. Gladys Hon Chau

President of the Hong Kong
Tang-Song Poetry and
Ci Research Association.

President of the Hong Kong
Youth Literature Promotion Association.



Ms. Tak Wan Luk

Member of Chinese Language
Arts Association

Vice President of Hong Kong
Putonghua Professional Association
Director of Greater Bay Area Cultural
and Art Exchange Association.



Bureau Members



Prof. Yanjun Ren

Chief Editor of Language Newspaper
Visiting Professor at Yan'an University

Director of the Chinese Language
Teaching and Research Center of
the Chinese Society of Education,
Committee of Secondary School
Chinese Language Teaching



Prof. Ze Zhan

Renowned recitation artist, language educator,
and guiding expert of the Ministry of
Education's "National Training Programme."

Host of the "Jiang Wu Tang" programme
on CCTV.

Chief Judge of the "Tong Sheng Lang Lang"
program on Hubei TV.

Chairman of the Reading and Expression Ability
Committee of the China Language
Newspapers and Periodicals Society.



Mr. Yuda Chen

Representative of Taipei
European International School



Ms. Yilin Wang

Director of Academic Affairs,
Head of Chinese at
Bromsgrove School Mission Hills



**Mr. Jorge
Sánchez-Camarena**

Representative of High School
No. 9 of the University of
Guadalajara, Mexico



Ms. Shuainan Quan

Representative of Nord Anglia
International School Hong Kong
Head of Chinese (Secondary)



Dr. Sihua Huang

Executive Director of the
Federation of Filipino-Chinese Schools
Principal of Morning Light School
in the Philippines

First Executive Director of the Southeast
Asian Education and Cultural
Exchange Conference.



Mr. Tao Yang

Graduated from the Performance
Department of Shanghai Theatre Academy,
worked as a tester for the National Language
Commission's Mandarin proficiency test.
Have portrayed numerous characters from
different historical periods and
cultures on the theatrical stage.



Ms. Jiana Wu

Representative of Wuxi Dipont
School of Arts and Science



Mr. Cunliang Yu

First-level warrior in Chinese martial arts
Coach of the Australian National Wushu Team
Head Coach of The ISF Academy
Martial Arts Team

President of the Hong Kong International
Martial Arts Education and Exchange Association



Ms. Chongyang Wu

Representative of Canadian
International School
of Hong Kong



Ms. Dandan Chen

Representative of King's College
International School Wuxi



Bureau Members



Ms. Yanjun Jia

Assistant Head of Junior School at
Wellington College International Tianjin



Mr. Jianxing Zhang

Representation of The Oriental
Cambridge Benxi International School



Ms. Sherry Li

The Principal of Hornsby
Chinese Language and Culture School



Ms. Xiaorong Lin

Founder of the Hong Kong Chinese
Cultural and Art Education Center



Ms. Miaoxian He

Representative of The Affiliated
Foreign Language School of SCNU



Ms. Renée Boey

Founder of Bloom KKCA Academy
ISTE Certified Educator and IB Trainer



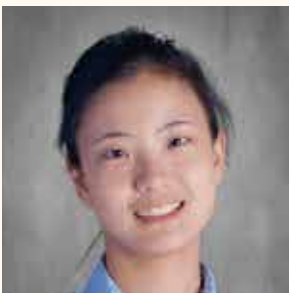
Ms. Peidong Tu

President of Qiao Guo Education
Intangible Cultural Heritage inheritor
Professional lecturer in
broadcasting and hosting



Morgan Cao

Head of Chinese Education at
the International Christian
School of Hong Kong



Ms. Tianni Guo

Representative of Hayward
Unified School District



Dr. Yu Hao Wu

Director of Chinese Language Curriculum
and Cultural Programs at
Wuxi Dipont School of Arts and Science



Ms. Haiyan Zhou

Representative of Xavier School



Ms. Sirui Zhang

Chinese Coordinator at
Wahaha International School



Bureau Members



Ms. Fenghua Yang

Founder of Zaoan Chinese Language
Social Mentor at the School of Literature,
Zhejiang University of Finance and Economics
Visiting Professor at the School of Literature,
Zhejiang University of Finance and Economics.



Ms. Winnie Yung

Representative of Hong Kong
Australian University



Ms. Junyuan Wang

Representative of Wahaha
International School



Dr. Shanhui Wu

Chinese Coordinator at
Caritas Yuen Long Chan Chun Ha
Secondary School



Ms. Zijun Zhou

Curriculum Director at
Hong Kong Education Publishing Limited
Founder of Hong Kong Speech Academy



Ms. Bing Liu

Chinese Coordinator at
Canadian International School of Beijing



Mr. Chao Wu

Representative of Wuchang
Institute of Technology



Ms. Shiyi Li

Representative of Fairfun
Cultural Education



Mr. Colin Lin

Chinese Coordinator at
Discovery Mind Primary School



Ms. Irene Tsen Jin Lin

Representative of HELP
International School



Mr. Xiaohan Zhao

Representative of Yan Zhou
High School of Zhong Shan
National Level One (Martial Arts) Coach



Ms. Cuiyan Yu

Representative of Po Leung Kuk
Tin Ka Ping Millennium
Primary School



Bureau Members



Ms. Blanche Tey

Representative of Peninsula International School Australia
Head of Modern Foreign Languages
Chinese Teacher
HSK Examiner
Chinese Programmes Coordinator
OH card practitioner



Ms. Meng Yang

Xi'an Liangjiatan International School MYP Coordinator
IB Mandarin ab initio Examiner,
Workshop Leader and School Visit Team Member



Ms. Xuan Gao

Representative of Lexue Education



Ms. Kunya Tang

Representative of Standard Putonghua Education Centre



Ms. Lih Jiun Chen

Representative of The Grange Institution



Ms. Shunling Cai

Founder of Brainstorming Education



Dr. Luxia Yan

IBCP/DP/MYP Workshop leader, Examiner, Course outline Reader, Lead Educator, Consultant, School Visit Team Leader, Evaluation Leader, and IB Chair of Synchronized and Multi-program Evaluation visit.



Ms. Alice Zhang

Representative of Dolce Music Center



Ms. Mia Nie

Chinese Studies Coordinator of HILA Nanning



Ms. Zhixuan Ning

Founder of Happy Scholars Learning Centre



Ms. Kuiling Li

Chinese Head of Pastoral, and Head of Chinese at The King's School Shenzhen International



Ms. Crystal Tse

Founder of Jingyan & Yuesi Education



Bureau Members



Ms. Winnie Chan

Director of Arts at the
Hong Kong Chinese Cultural
and Art Education Center



Ms. Kasey Ou

Head of the Chinese Department
of the Primary School at
Nanning Harrow International School



Prof. Jinhui Wu, PhD

Coordinator of Chinese Language Program
Department of Global
Languages and Cultures
Rollins College, USA



Ms. Rachel Mah

Elementary Head of Mandarin
Assistant Deputy of Teacher Affairs
Nobel International School



Ms. Linda Ting

Founder & Director
Ting Ting Education Centre



Ms. Jinfeng Xu

Representative of the
Shengxin International Cultural
and Artistic Promotion Center



Ms. Annabel Ye

Principal of Yew Wah
International Education School of Beijing



Ms. Jess Lim Yuh Lian

Head of Primary Mandarin
in Taylor's International
School Kuala Lumpur



Ms. Suhua Xu

Representative of the Hong Kong
Wenhua International Language
Education Center



**Ms. Yiyuan
(Tiffany) Zhang**

Assistant Principal of
Irvine International Academy,
Vice President of CABC Mandarin



Ms. Serena Ying Law

Representative of Canadian
International School of Hong Kong



Ms. Tracey Ting Wu

Representative of Merchant
Taylors School Liverpool

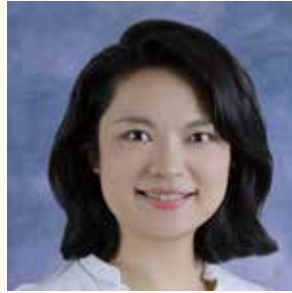


Bureau Members



**Ms. Jocelyn
Seah Shu Fun**

Primary Head of Mandarin,
Taylor International School (Puchong)



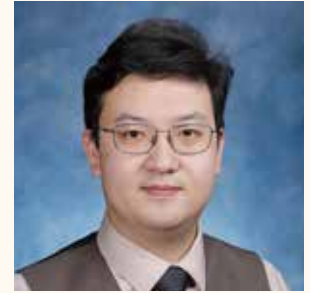
Ms. Miranda Li

The Assistant Principal of ES & PS



Ms. Janet Yang

Head of Chinese Department
of YMCA Christian Academy



Mr. Victor Guo

Chinese History and Culture
Program Coordinator of
Victoria Shanghai Academy



Ms. Carrie Mizera

Executive Director of
Renaissance School International, USA



Mr. Chen Liu

IBDP Coordinator
Head of Chinese and High School
Coordinator of GDUFS International
School, Guangzhou



Ms. Yongqin Hou

Representative of Chinese of
Xi'an Liangjiatan International School



Prof. Lizhu Zhang

Changhua Normal University, Taiwan
Chairman of the Association for
the Promotion of Chinese
Classical Culture



Ms. Fang Wang

Founder of First Chinese
Education Centre



Ms. Xiaotong He

Primary Mandarin Lead and
Chinese Bilingual Program
Coordinator at Shekou International School



Ms. Junren You

Chinese language and literature teacher,
Chinese Coordinator of
ISA Wuhan Campus



Ms. Lingling Qian

Representative of Achieve
Xiamen International School
Head of Chinese



Bureau Members



Mr. James Li

General Manager of Futeng Education
International curriculum advisor of
High school affiliated to
Fudan University, Qingpu Campus
Director of Foreign Affairs Office



Ms. Tina Kong

Deputy General Manager
of Futeng Education
Vice President of Melbourne
International Artists
Exchange Association



Ms. Wenyan Xie

Founder and Headmistress
of Xueyan Education Training Center



Ms. Caroline Zhang

Head of Chinese (Primary) at
Wellington College
International Shanghai



Ms. Lisha Yan

Head of Chinese Cultural Projects
& Head of Educational Technology
at Wellington College Tianjin



Ms. Angela Gao

Head of Bilingual at
XCL World Academy



Ms. Fei GAO

World Languages Department Lead,
Korea International School Jeju Campus



Ms. Michelle Li

Beijing International
Bilingual Academy
Student Affairs and
Activities Coordinator



Ms. Huarong Yang

Director of Course Planning at
Golden Cricket (Hong Kong)
Speech Training Center



Ms. Qiao Xu

Head of Upper School Mandarin
Department at International
School of Indian



Dr. Luk Chan

Luk Chan Chinese
International Education Corporation
Founder and School Supervisor



Ms. Winnie Zhao

Founder of One World Education,
New Zealand
Director of Study Tour
Department of COITS



Bureau Members



Mr. Brian He

Head of Chinese at Concordia School Ningbo



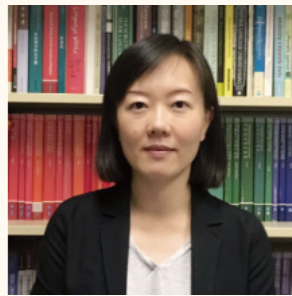
Judges Committee



Chief Judge
Prof. Siu-lam Tin



Chief Judge of
Mainland China Region
Ms. Zhao-Hui Xu



Chief Judge of Hong Kong,
Macau and Taiwan
Dr. Yuan Liang



Chief Judge of Overseas Region
Ms. Delinda Wu



Speech Category
Lead Judge
Mr. Xun Li



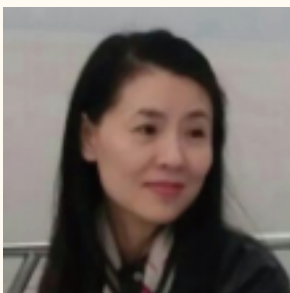
Storytelling
Lead Judge
Ms. Sailu Li



Music
Lead Judge
Dr. Ruochen Han



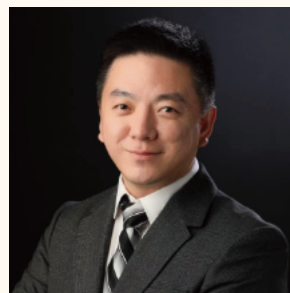
Dancing
Lead Judge
Dr. De Zeng



Pinyin Category
Lead Judge
Ms. Weichun Liang



Painting and Drawing
Category
Lead Judge
Ms. Min Zhong



Ancient Poem Category
Lead Judge
Dr. Fei Li



Modern Poem Category
Lead Judge
Dr. Gladys Hon Chau



Judges Committee



Composition Category
Lead Judge

Dr. Mengyao Jin



Chinese Martial Arts Category
Lead Judge

Mr. Cunliang Yu



Dubbing Category
Lead Judge

Prof. Ze Zhang



Traditional Chinese
Comedic Performance Category
Lead Judge

Mr. Tao Yang

Age Groups

1. Kindergarten (4-5 years old)
born from 1 April 2019 to 31 March 2021
2. Lower Primary (6-7 years old)
born from 1 April 2017 to 31 March 2019
3. Middle Primary (8-9 years old)
born from 1 April 2015 to 31 March 2017
4. Upper Primary (10-11 years old)
born from 1 April 2013 to 31 March 2015
5. Junior High School (12-15 years old)
born from 1 April 2009 to 31 March 2013
6. Senior High School (16-18 years old)
born from 1 April 2006 to 31 March 2018
7. University (19-24 years old)
born from 1 April 2000 to 31 March 2006

Competition Procedures

Individual Registration

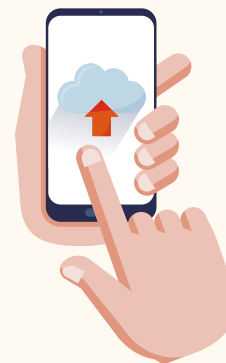
1. Click "Individual Registration"

Click "Individual Registration" on the main webpage, fill in the form with your personal information and competition items, and then proceed with the payment;



2. Receive a confirmation email

You will receive a confirmation email sent by the committee. In the email you will find the link of your competition webpage, and your login details



3. Upload your works

Login to the competition webpage, upload your works, which will be automatically saved on the webpage. You may change your works at this stage;



4. Work Submission and Scoring

Click "Work Submission and Scoring" to submit your works. No changes are allowed to make after the submission.



5. Check your score report and award certificate

Login to your competition webpage after three weeks to check your score report and award certificate (if any).

Note:

You must download your score report and certificate from the competition webpage before 31 July 2025, as you will not be able to access the webpage since then.

Competition Procedures

Group Registration

1. Click "Group Registration"

Click "Group Registration" on the main webpage, fill in the form with group information and proceed with payment for the membership fees (Group member can enjoy a 20% discount on the payment)



2. Receive a confirmation email

You will receive a confirmation email sent by the committee. In the email you will find the link of your competition webpage, and your login details

3. Proceed with the payment

Login to the competition webpage, fill in the form with the participants information, select the competition items, and then proceed with the payment



4. Upload your works

Upload your works to the webpage. The works will be automatically saved on the webpage. You may change your works at this stage;

5. Work Submission and Scoring

Click "Work Submission and Scoring" to submit your works. No changes are allowed to make after the submission.



6. Check your score report

Login to your competition webpage after three weeks to check your score report and award certificate (if any).

Note:

You must download your score report and certificate from the competition webpage before 31 July 2025, as you will not be able to access the webpage since then.



Competition Items



Each participant can enter 1-5 competitions within the age group

| Category | Competition Item | Language Group | Age Group |
|--------------------------------|--|---------------------|----------------|
| Recitation | | | |
| 1 | Modern Poems Solo Recitation (Content : self-selected) | Native & Non-Native | ALL Age Groups |
| 2 | Modern Poems Group Recitation (2-9 people; Content : self-selected) | Native & Non-Native | ALL Age Groups |
| 3 | Modern Poems Choral Recitation (10 people above; Content : self-selected) | Native & Non-Native | ALL Age Groups |
| 4 | Ancient Poems Solo Recitation (Content : self-selected) | Native & Non-Native | ALL Age Groups |
| 5 | Ancient Poems Group Recitation (2-9 people; Content : self-selected) | Native & Non-Native | ALL Age Groups |
| 6 | Ancient Poems Choral Recitation (10 people above; Content : self-selected) | Native & Non-Native | ALL Age Groups |
| 7 | Ancient Proses Solo Recitation (Content : self-selected) | Native & Non-Native | ALL Age Groups |
| 8 | Modern Proses Solo Recitation (Content : self-selected) | Native & Non-Native | ALL Age Groups |
| Reading Aloud | | | |
| 9 | Individual Reading Aloud (any self-selected material, any genre) | Native & Non-Native | ALL Age Groups |
| 10 | Duo Reading Aloud (any self-selected material, any genre) | Native & Non-Native | ALL Age Groups |
| 11 | Group Reading Aloud (3-9 people, any self-selected material, any genre) | Native & Non-Native | ALL Age Groups |
| 12 | Collective Reading Aloud (10 or more people, any self-selected material, any genre) | Native & Non-Native | ALL Age Groups |
| Storytelling | | | |
| 13 | Story Telling (Content : self-selcted; Time limit:1-3 minutes) | Native & Non-Native | ALL Age Groups |
| Speech | | | |
| 14 | Prepared Speech (Promote any Chinese intangible cultural heritage item, Time limit: 5 minutes) | Native & Non-Native | ALL Age Groups |
| 15 | Themed Presentation (Any topic, Time limit: 5 minutes) | Native & Non-Native | ALL Age Groups |
| Dubbing | | | |
| 16 | Solo-voice Dubbing (Content : self-selcted; Time limit: 1-3 minutes) | Native & Non-Native | ALL Age Groups |
| 17 | Multi-voice Dubbing (Content : self-selcted; 2 or more people; Time limit: 1-3 minutes) | Native & Non-Native | ALL Age Groups |
| Tongue Twisters | | | |
| 18 | Tongue Twisters (Content : self-selected) | Native & Non-Native | ALL Age Groups |
| Xiàng Sheng Performance | | | |
| 19 | Comic Monologue (Content : self-selcted; Time limit: 3 minutes) | Native & Non-Native | ALL Age Groups |
| 20 | Comic dialogue (Content : self-selcted; Time limit: 5 minutes) | Native & Non-Native | ALL Age Groups |
| 21 | Multi-player talk show (Content : self-selcted; Time limit: 5 minutes) | Native & Non-Native | ALL Age Groups |



| Category | Competition Item | Language Group | Age Group |
|---|---|---------------------|---------------------------------------|
| Chinese Bamboo Allegro | | | |
| 22 | Solo Chinese Bamboo Allegro Performance (Content : self-selected; Time limit: 1-3 minutes) | Native & Non-Native | ALL Age Groups |
| 23 | Pairs Chinese Bamboo Allegro Performance (Content : self-selected; Time limit: 1-3 minutes) | Native & Non-Native | ALL Age Groups |
| 24 | Multi-person Chinese Bamboo Allegro Performance (Content : self-selected; Time limit: 1-3 minutes) | Native & Non-Native | ALL Age Groups |
| Singing | | | |
| 25 | Singing of Nursery Rhymes (Content : self-selected) | Native & Non-Native | Kindergarten & Lower Primary |
| 26 | Singing of Children's Songs (Content : self-selected) | Native & Non-Native | Middle Primary & Upper Primary |
| 27 | Singing Show / Singing with musical instruments (Content:self-selected) | Native & Non-Native | Junior High, Senior High & University |
| 28 | Choral singing (2-9 people, Content:self-selected) | Native & Non-Native | ALL Age Groups |
| 29 | Choir (10 people above, Content:self-selected) | Native & Non-Native | ALL Age Groups |
| Dancing | | | |
| 30 | Solo Dance (Any form of dance) | Native & Non-Native | ALL Age Groups |
| 31 | Duo Dance (Any form of dance) | Native & Non-Native | ALL Age Groups |
| 32 | Multi Dance (2-9 people ; Any form of dance) | Native & Non-Native | ALL Age Groups |
| 33 | Group Dance (10 people above ; Any form of dance) | Native & Non-Native | ALL Age Groups |
| Chinese Instrumental Competition | | | |
| 34 | Chinese Instrumental Competition (Content : self-selected; 1-5 minutes) | Native & Non-Native | ALL Age Groups |
| Western Musical Instruments | | | |
| 35 | Western Instrument Performance Competition (Perform any self-selected Chinese musical piece; Duration: 1-5 minutes) | Native & Non-Native | ALL Age Groups |
| Chinese Martial Arts | | | |
| 36 | Chinese Martial Arts Routines (Time limit: 1-5 minutes) | Native & Non-Native | ALL Age Groups |
| 37 | Chinese Boxing (Long fist, Southern Fist, Tai Chi, or other Chinese boxing styles; Time limit: 1-5 minutes) | Native & Non-Native | ALL Age Groups |
| 38 | Sword Play (Time limit: 1-5 minutes) | Native & Non-Native | ALL Age Groups |
| 39 | Broad Sword Play (Time limit: 1-5 minutes) | Native & Non-Native | ALL Age Groups |
| 40 | Cudgel Play (Time limit: 1-5 minutes) | Native & Non-Native | ALL Age Groups |
| 41 | Spear (Time limit: 1-5 minutes) | Native & Non-Native | ALL Age Groups |
| 42 | Nunchakus (Time limit: 1-5 minutes) | Native & Non-Native | ALL Age Groups |



| Category | Competition Item | Language Group | Age Group |
|------------------------------------|--|---------------------|--|
| Chinese Martial Arts | | | |
| 43 | Three-section cudgel/staff (Time limit: 1-5 minutes) | Native & Non-Native | ALL Age Groups |
| 44 | Bare-handed Duel (Time limit: 1-5 minutes) | Native & Non-Native | ALL Age Groups |
| 45 | Weaponed Duel (Time limit: 1-5 minutes) | Native & Non-Native | ALL Age Groups |
| 46 | Hand-to-Weapon Duel (Time limit: 1-5 minutes) | Native & Non-Native | ALL Age Groups |
| 47 | Group Boxing (5 or more people ; Time limit: 1-5 minutes) | Native & Non-Native | ALL Age Groups |
| 48 | Group Sword Play (5 or more people ; Time limit: 1-5 minutes) | Native & Non-Native | ALL Age Groups |
| 49 | Group Broad Sword Play (5 or more people ; Time limit: 1-5 minutes) | Native & Non-Native | ALL Age Groups |
| 50 | Group Cudgel Play (5 or more people ; Time limit: 1-5 minutes) | Native & Non-Native | ALL Age Groups |
| Chinese Artistic Gymnastics | | | |
| 51 | Single Artistic Gymnastics (Time limit: 1-5 minutes) | Native & Non-Native | ALL Age Groups |
| 52 | Pair Artistic Gymnastics (Time limit: -5 minutes) | Native & Non-Native | ALL Age Groups |
| 53 | Group Artistic Gymnastics (3-9 people; Time limit: 1-5 minutes) | Native & Non-Native | ALL Age Groups |
| 54 | Group Gymnastics (10 or more people; Time limit: 1-5 minutes) | Native & Non-Native | ALL Age Groups |
| Pinyin | | | |
| 55 | Reading Out Pinyin Consonants and Vowels (offered by the Organiser) | Native & Non-Native | ALL Age Groups |
| 56 | Reading Out Pinyin words (offered by the Organiser) | Native & Non-Native | Native Kindergarten, Non-Native Kindergarten, Lower & Middle Primary |
| 57 | Direct Reading of Pinyin words and sentences (offered by the Organiser) | Native & Non-Native | Native Lower & Middle Primary, Non-Native upper Primary |
| 58 | Direct Reading of Pinyin Words, Sentences and Paragraphs (offered by the Organiser, Native Upper Primary / Junior High) | Native & Non-Native | Native Upper Primary & Junior High |
| 59 | Direct Reading of Pinyin Words, Sentences and Paragraphs(offered by the Organiser, Native-Senior High / University; Non-Native Junior High / Senior High / University) | Native & Non-Native | Native Senior High & University / Non-Native Senior High & University |
| Painting | | | |
| 60 | Painting (Traditional Chinese Painting, Oil Painting, Watercolour Painting) | Native & Non-Native | ALL Age Groups |
| 61 | Four-frame Comic Drawing (No Restrictions in Number of Words and Topics) | Native & Non-Native | ALL Age Groups |
| 62 | Digital Art on iPad / Computer (Content: self-selected) | Native & Non-Native | ALL Age Groups |
| 63 | Poster Design (Content: self-selected) | Native & Non-Native | ALL Age Groups |
| 64 | Pencil Sketching (Content: self-selected) | Native & Non-Native | ALL Age Groups |
| Calligraphy | | | |
| 65 | Hard Pen Calligraphy (Pencil , choose any five-character quatrain to copy) | Native & Non-Native | Kindergarten, Lower, Middle and Upper Primary |



| Category | Competition Item | Language Group | Age Group |
|--------------------|---|---------------------|---|
| Calligraphy | | | |
| 66 | Hard Pen Calligraphy (Ballpoint Pen ,choose any seven-character quatrain to copy) | Native & Non-Native | Junior High School |
| 67 | Hard Pen Calligraphy (Ink pen; Choose any Modern Poems to write) | Native & Non-Native | Senior High School & University |
| 68 | Hard Pen Calligraphy (Pencil, choose 10 characters to copy) | Native & Non-Native | Kindergarten |
| 69 | Hard Pen Calligraphy (Pencil, choose 15 characters to copy) | Native & Non-Native | Lower Primary |
| 70 | Hard Pen Calligraphy (Pencil , choose any sentence with around 20 characters to copy) | Native & Non-Native | Middle Primary |
| 71 | Hard Pen Calligraphy (Pencil , choose any paragraph with around 50 characters to copy) | Native & Non-Native | Upper Primary |
| 72 | Hard Pen Calligraphy (Ballpoint Pen , choose any paragraph with around 80 characters to copy) | Native & Non-Native | Junior High School |
| 73 | Hard Pen Calligraphy (Ink pen , choose any articles with around 100 characters to copy) | Native & Non-Native | Senior High School |
| 74 | Hard Pen Calligraphy (Ink pen , choose any articles with around 150 characters to copy) | Native & Non-Native | University |
| 75 | Chinese Brush Calligraphy (choose any four-character idiom to copy) | Native & Non-Native | Native Lower and Middle Primary, Non Native Lower, Middle and Upper Primary |
| 76 | Chinese Brush Calligraphy (choose any motto to copy) | Native & Non-Native | Native Upper Primary and Junior High School, Non Native Junior High School |
| 77 | Chinese Brush Calligraphy (choose any Sung's phrase to write) | Native & Non-Native | University |
| 78 | Chinese Brush Calligraphy (choose any Tang's poem to write) | Native & Non-Native | Native Senior High School, Non Native Senior High School and University |
| Composition | | | |
| 79 | Chinese Composition (Content : self-selected, around 100 characters) | Non-Native | Middle Primary |
| 80 | Chinese Composition (Content : self-selected, 100-150 characters) | Native | Lower Primary |
| 81 | Chinese Composition (Content : self-selected, 150-200 characters) | Non-Native | Upper Primary |
| 82 | Chinese Composition (Content : self-selected, 150-300 characters) | Native | Middle Primary |
| 83 | Chinese Composition (Content : self-selected, 200-350 characters) | Non-Native | Junior High School |
| 84 | Chinese Composition (Content : self-selected, 250-400 characters) | Non-Native | Senior High School |
| 85 | Chinese Composition (Content : self-selected, 300-500 characters) | Native & Non-Native | Native Upper Primary, Non Native University |



| Category | Competition Item | Language Group | Age Group |
|---|---|---------------------|---------------------------|
| Composition | | | |
| 86 | Chinese Composition (Content : self-selected, 400-800 characters) | Native | Junior High School |
| 87 | Chinese Composition (Content : self-selected, 800-1000 characters) | Native | Senior High School |
| 88 | Chinese Composition (Content : self-selected, 1000-1500 characters) | Native | University |
| Poems Writing | | | |
| 89 | Ancient Poems Writing (Content : self-selected) | Native & Non-Native | ALL Age Groups |
| 90 | Modern Poems Writing (Content : self-selected) | Native & Non-Native | ALL Age Groups |
| Chinese Teacher Capability Competition | | | |
| 91 | Chinese Teacher Capability Competition | Native & Non-Native | For Chinese Teachers Only |



Awards



- 1 First, Second, Third prize and Award of Merit for each competition item of each age group**
(An electronic certificate will be given to every winner)
- 2 Champion (Zhuang Yuan) award for the champions of 4 competitions of the same age group**
(An electronic certificate and a trophy will be given to the champion)
- 3 Chinese Language Festival Ambassador award for the most outstanding winners**
(A certificate, a special trophy and cash award will be given to the winners)
- 4 Excellence of Participation award for the school or organisation with more award winners or more participants**
(A certificate will be given to the winners)
- 5 Excellent Teacher award for teachers of 10 or more winners**
(Certificate and trophy will be presented)
- 6 Excellent Judge Award is awarded to judges with exceptional overall performance.**
(Certificate and trophy will be presented)
- 7 Excellent Volunteer Award is awarded to university student volunteers with exceptional overall performance.**
(Certificate and trophy will be presented)
- 8 Group Champion Award is awarded to the champion school in team events.**
(Certificate and trophy will be presented)
- 9 Chinese Teacher Capability Competition Champion Award is awarded to the winner of the competition.**
(Certificate and trophy will be presented)



Submission Requirements



1. All works for competition must honour the mission of the event, and must not contain any content of violence, crime, obscenity, bullying, hatred, discrimination, etc.
2. Participants must enter items of the correct age group. Each participant can register one to five items.
3. Work submitted must match the name of the competition item entered, e.g. for competition item “Self-selected Five-Character Quatrain”, the recital work submitted must be a Chinese poem with four lines and 5 characters in a line.
4. Putonghua must be used in all speaking and performing items. Both simplified and traditional Chinese characters are accepted and equally credited for written work.
5. All writing must be handwritten. Both traditional and simplified Chinese are accepted. Writing needs to be neat and legible.
6. Submitted work, including but not limited to composition and visual art, must not bear the participant’s name or any other personal information.
7. Submitted video must be a full-body video, with reasonable space above the head, for the judges to assess the participant’s stage manner and to determine whether the performance matches the characteristics of the work presented.
8. Videos must be shot indoors in a quiet, well-lit environment. The background of each video must be simple and clear.
9. Recital videos must be the original take with no editing or post-production refinement.
10. For recital items, participants must report the title of the work and the name of the author before starting. Either modern or archaic pronunciation may be used for classical poetry, each earning equal credits.
11. For performing items, appropriate props, music, and costumes may be used, although they are not necessarily essential for credit.

Application Fees

| | |
|---|--|
| 1 competition item | HKD250 |
| 2 competition items | HKD450 |
| 3 competition items | HKD600 |
| 4 competition items | HKD750 |
| 5 competition items | HKD900 |
| Group item (through group registration) | HKD800 |
| Collaborative item | HKD500 |
| Teacher Capability Competition | HKD800 |
| Choral Speech | HKD500 (through Group Registration) |
| Collaboration Item | HKD350 |



Chinese Teacher Capability Competition



Participants: All Chinese Teachers / Pre-service Teachers
all over the world

Judges: Chinese Curriculum Leaders of well-known international
schools

Purpose:

- 1) to develop Chinese teachers' teaching capabilities;
- 2) to strengthen Chinese teachers / Pre-service teachers' job competition ability
- 3) to effectively assess Chinese teachers / Pre-service teachers' capability, and provide suggestions for their professional development.



Section 1: Chinese Lesson Plan, including :

- 1) a self selected text (article or dialogue)
- 2) a lesson plan
- 3) PPT slides for teaching

Detailed Requirements:

select a teaching text, design a lesson plan based on the text (free format, written in Chinese) with PPT slides attached. In your planner, you need to clarify the following aspects: teaching targets, teaching objectives, teaching contents and activities, knowledge points, teaching steps, use of resources, use of ICT in teaching, differentiation, and classroom management.

Section 2: a self-introduction video (no more than 5 minutes), including:

- 1) Your teaching experiences / the nature of organisation you are working in or your study experiences (1 minute, speaking in Putonghua)
- 2) Your teaching philosophy and interests (1 minute, speaking in Putonghua)
- 3) How can we make Chinese classes interesting, relevant, and challenging while catering to the different learning needs of students? (3 mins, English)

Application Fee: HKD\$800

Please scan the QR code to
register for the competition:





Host:



國際漢語節協會

Chinese Language Festival Association

Chief Organiser:

Avenues 爱文



**The 5th Chinese
Language Festival
2024/2025**



**Chinese sounds and words,
echoing heavens and earth**

Platform Powered by:

